



LYNFIELD
COLLEGE

NEWSLINK

NEWSLETTER 1 | 11 FEBRUARY 2022

From Principal Cath Knell

Mehemea ka moemoeā ahau, ko ahau anake.

Mehemea ka moemoeā tātou, ka taea e tātou.

If I dream, I dream alone. If we dream as a collective,
we can achieve our dream | *Te Puea Herangi*

Kia ora koutou

It has been so lovely welcoming those new to our school and those returning over the past couple of weeks. We have been delighted to see over 92% of our students engaged in onsite learning this week, working with their class and Hui mai teachers. All teaching staff are working with a Hui mai group of around 15 students this year which will allow for stronger relationships and connection with whānau. Your child's Hui mai teacher will be in touch to introduce themselves over the next month. In support of this please make sure that you have updated any contact details by emailing admin@lynfield.school.nz.

Our school value for Term 1 is **Whanaungatanga tika** with an initial focus for the first couple of weeks on **we are caring**. Students have demonstrated this in school by helping others in finding their classes, helping new students to login to the school network and sign up for extra curricular activities. Peer Support leaders have been particularly active here in supporting the Year 9 students. We have also heard of instances out of school where our students have been noted for their caring actions. This has included an instance where a couple of our girls assisted a member of the community who had fallen and injured themselves badly. On behalf of those they have helped and those that have seen and emailed us of their actions - thank you.

Over the summer break our Student Services Centre has been 'deconstructed' before being 'reconstructed'. When this refurbishment has been completed we will have much improved facilities for working with our students including a larger Health Centre.

With schools operating under CPF (Covid Protection Framework) RED there will be further changes to if or how school events and activities can run. You can expect emails advising you of how this will affect our students and our school community closer to the time the event or activity has been scheduled for.

Thank you for your support of your child and the college and your understanding of the changed guidelines that we are operating under.

Noho haumarū - stay safe and well

Cath Knell

Tumuaki | Principal

IN THIS ISSUE

- First Weeks Back
- New Staff Profiles
- Welcome to New Staff
- Kowhai Kai
- Make Tonga Your Valentine
- Student Success
- Virtual Trip to Germany
- Lynfield BYOD 2022
- Uniform and Stationery Shop
- New Canteen Operators
- Student Services Information
- NCEA Results 2021
- Staff Vacancies for 2022



Welcome
Back!

First Weeks Back

Year 9 Students are welcomed with a whakatau on the field.



Year 9 Orientation

Our new Year 9 students have had a wonderful two days settling in to Lynfield College. They have been working in small Hui mai groups to get to know each other and the school. Activities include creating a class 'treaty' and a class identification project.

The finale was an afternoon of tabloid sports which was great fun. These new students were very successfully supported by our senior peer support leaders.



Year 9 Orientation continued



Mihi Whakatau for New Staff



Welcome to our New Staff

We will be highlighting our new staff over the next few issues of Newslink. Here are the first three ...



LARISSA PAKURA (PKR)

Kia ora e te whānau o Te Kāreti o Pukewiwi. My social studies, commerce, business and te reo Māori students know me as Whaea Larissa. I reside in the Kaipara area with my partner and two daughters who are at primary school. Also, we quite often launch our tinnie (or fizz boat) from the wharf 5 minutes drive from my house to catch fresh fish (mostly snapper) in what the locals call Old Ships Channel in the



THOMAS HUSBAND (HSB)

Kia ora all, I am Thomas Husband and I am new to the English department this year. I am a first year teacher and previously worked in the TV industry in post-production. I really enjoy watching movies and TV, board games and anything else nerdy. Don't hesitate to come and have a chat to me when you see me around school, I'll do my best to remember your name.



ZUBIN IRANI (IRN)

I am a Mathematics teacher having held varied Senior leadership roles in my teaching profession spanning over almost two decades. I have joined Lynfield College as Assistant Head of Faculty for Mathematics and Statistics. Students are my main motivation for wanting to teach Mathematics and I take on the role to inspire and encourage students of all abilities to give their best and work hard to make them overcome the stigma associated with the subject.

Kowhai Kai

Kōwhai Kai is a student wellbeing programme that supports Lynfield College students and their whānau going through hardship. At the start of lunch time, kai is provided in D12 for students that do not have the means to bring lunch to school. If you want to find out more, you can contact Mrs Wichman-Kelly or Mrs van Niekerk.

Since June 2019 we have been able to supply kai to 3,530 Lynfield College students and Kowhai Kai has also enabled Lynfield College to support families as part of our COVID response during LOCKDOWN with 295 Kōwhai Care, providing care packages.

We would like to thank staff, whānau and students, Board of Trustees, and the wider community for donations to support this programme. Special thanks to DeeJays who supported this programme last year and to Kickstart Breakfast for your continuous support.



Donations can be made to: Lynfield College, 12-3049-0248027-00, Ref: Kōwhai Kai

Make Tonga Your Valentine

Malo e lelei, Monday 14 February is Valentine's Day

Pacific Pride, Young Māori Leaders and Student Exec have created the opportunity for students and staff to donate non-perishable items to send to Tonga in response to the recent eruption and current lockdown.

The focus is to make Tonga our Valentine. We specifically chose this day as it symbolises the importance of love and affection. Valentine's Day is our way to show our love and affection to the people for Tonga.

Staff and students are asked to donate a non-perishable item such as pasta, rice, noodles, or canned food starting from Monday 14th February. These donations will then be collected throughout the week and taken to Mt Smart stadium to be sent to Tonga.

We thank you for your contributions.

**With Gratitude,
Young Māori Leaders, Pacific Pride Leaders and Student Executive 2022**



Malo e lelei, 'I he 'aho 14 'o Fepueli 'a ia koe 'aho Monite ko 'eni hoko mai koe 'aho fakamanatu 'ia 'ae 'Aho Valenitaine 'i Nu'usilani

Koe Fakatangi mei he Pacific Pride Leaders, Maori Leaders pea moe Student Exec ki he fanau 'ako moe kau ngaue kotoa pe, kemou kataki mu'a koe kole, ka 'iai ha'amou 'ofa kihe 'etau me'a 'ofa ke ave ki Tonga. Kataki mu'a fakatokanga'i ange koe me'akai 'oku fiema'u ke ave ki Tonga koe me'a tokoni 'oku tolonga fuoloa, he 'oku efu 'ae fonua pea toe taha 'oku nau toe tatapuni mo nofo ma'u 'i api.

Koe fakakaukau ko 'etau Valenitaine 'a Tonga pea ko 'etau 'ofa 'ia kihe ngaahi maumau lahi na'e hoko 'i Tonga. Koe founda 'ia 'oku mau fakakaukau ki ia ketau fakaha'ai 'etau 'ofa kihe si'i kakai 'i Tonga.

Kau ngaue pea moe fanau ako koe me'a kai kemou tatanaki mai koe Laise, meakai kapa, nutolo, pea moe ngaahi meakai pe 'oku mou sio 'oku 'aonga mo Tolonga ki Tonga 'oku fakama'opo'opo ia 'i he 'aho 14 'o Fepueli. Kataki ko ho'o faingamalie pe 'ihe uikenia pea tuku mai leva ho'o tokoni ke fakama'opo'opo 'ihe uike ni ke ave ki Mt Smart Stadium he Monite Uike kaha'u.

Fakamalo lahi aupito atu homou tali 'ae fakatangi ni.

**Faka'apa'apa atu meihe
Young Maori Leaders, Pacific Pride Leaders and Student Executive 2022**

Student Success

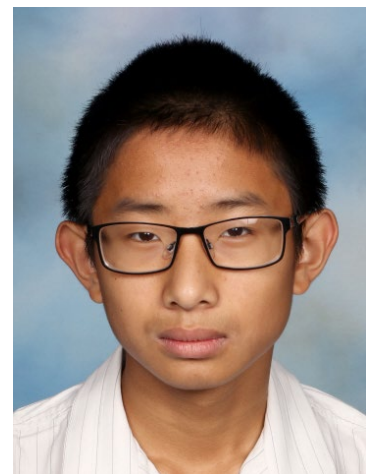
Evan Huang is one of five finalists in the 2022 VEX – 'Make It Real' CAD Engineering Online Challenge Sponsored by Autodesk. The winner will be announced by 23 February 2022.

<https://challenges.robotevents.com/challenge/161/entry?filter=finalists>

Autodesk is dedicated to preparing the next generation of tinkerers, makers, designers, and engineers to lead in the future of work. Their technologies allow students to turn ideas and innovations into reality. Entries for this challenge use Autodesk 3D design software to conceptualize and model a new robot component.

During summer holiday, Evan designed and developed a new kit for VEX Robotic Challenge that adds new functionality and solves a real-world design issues. Evan's project: 8-Post Hex Nut Retainer Kit. See the project detail:

<https://challenges.robotevents.com/challenge/161/vexu-make-it-real-cad-engineering-online-challenge-sponsored-by-autodesk/entry/10291>



Many thanks to Mr Yearbury (Lynfield Robotics Club coach) for 3D printing the parts during school holiday.

Virtual Trip to Germany

Over the January holidays, a few students from our Year 12 German class got the opportunity to go down to Wellington for a 3-day 'Virtual Exchange' to Germany, alongside a group of 13 other students from all around New Zealand, including Dunedin, Wellington, Christchurch and Ashburton. Over those three days, we participated in a variety of different German activities, ranging from singing evergreen German songs, learning a groovy dance, virtually visiting a big city in Germany, Frankfurt and also a German speaking country, Switzerland, up until a fun scavenger hunt around the Wellington CBD and preparing a typical German dinner together.

The trip was an awesome experience which involved plenty of opportunities being granted, such as getting to know students like us, from all over New Zealand and building special bonds with them. The little German conversations with our peers were very immersive, all in a way that didn't even feel like learning it. A huge thanks to the Goethe Institut for organising such an amazing event and granting us a golden opportunity to be a part of it, even in times of the pandemic when a proper exchange to Germany wasn't possible, this was a great alternative!

Sarka Ludvigova, Issy Mason, Melanee Edwin



BYOD at Lynfield 2022

Lynfield College is a Bring your Own Device (BYOD) school. Every student is required to have a suitable device for learning that they can bring to school every day. All of our courses at every level have an online component and devices are used by students on a daily basis to access learning activities and resources. It also provides us with the ability to switch from 'face-to-face learning' to 'learning from home' should the need arise.

There are a range of suitable devices available from a number of different retailers. The basic recommendations can be found on our website: <https://www.lynfield.school.nz/Curriculum/e-Learning.html>

If you are struggling financially to provide a device for your child(ren) we can arrange for them to loan a device from the school with a \$30 deposit for one device, \$50 for two and \$70 for three or more from the same immediate family. This will involve your child collecting an agreement form from Mr Winn or Mrs Wichman-Kelly to take home for parent/s to sign and return to the Account's office with the deposit. This is a refundable deposit should the device(s) be returned in full working order.

The school aims to support all students to have access to a device but we will only be able to loan devices where there is family hardship. That way we can use our limited resources to supply those students in genuine need. Should you like to discuss your individual situation please contact:

Deputy Principal Lisa Wichman-Kelly at 09 627 0600 extn 704

Email: lwichmankelly@lynfield.school.nz or

Deputy Principal Richard Winn at 09 627 0600 extn 705

Email: rwinn@lynfield.school.nz

Uniform and Stationery Shop

The Uniform and Stationery Shop is open to all students on site for their uniform and stationery needs during first and second interval, Mondays to Thursdays, and before school at 8am and first interval on Fridays.

To work within current government guidelines, we are only able to accommodate parents/caregivers on site to assist with uniform fittings or purchases **by appointment only**. For an appointment please book at [Schoolpoint](#) with instructions on using Schoolpoint [here](#).

Online ordering is available through our website <https://www.lynfield.school.nz/shop.html>. Payment can be made by direct credit or credit card and students onsite are able to collect the items from the Shop during the above times.

Caps and Bucket Hats will be back in stock in the next few weeks, and a Schoology post will be made when they are in stock. Stationery packs are available in the shop and online, for year 9 and 10 students. All other year levels are able to purchase their stationery in the shop once they have their specific requirements confirmed in class.

For any further queries please email Nicky Pin at uniformshop@lynfield.school.nz

A Message from our New School Canteen Operators

DC Caterers are delighted to be the new canteen operators at Lynfield College for 2022. In business for 15 years, DC Caterers operates a number of canteens at schools within the Auckland area. We are trusted by those schools and value the strong and longstanding relationships we have with them.

Good, honest, affordable, and tasty food is our business, and we are looking forward to getting to know you all. We care about delivering you a good selection of food and drink at the canteen and giving you great friendly service.

From the local community, our team working in the canteen cannot wait to get started and they, along with DC Caterers, hope you enjoy the changes we will bring. Come and check us out this term and see what you think and share your thoughts with us!

Hearing Testing

The National Foundation for the deaf and hard of hearing, will have a bus at Lynfield College 14-18 March. They will be testing the hearing of our year 9 students. An email went out to parents and caregivers last week. If you want your child to be included in this please complete the link in the email, or email: nurse@lynfield.school.nz and say you consent to the hearing test and provide your child's name.

Student Services Current Locations and Contact Information

As there is currently no Student Services Reception, contact details for each staff member are below:

Counselling

Catherine Hawke ext 747, **Sandra van Eden** ext 746, **Graeme Smith** ext 752, **Betty Lin** blin@lynfield.school.nz are located in the old Reading Room. Entrance is off the deck. A student looking for an appointment with a counsellor should email Catherine at: chawke@lynfield.school.nz If you are concerned about a student please also email Catherine.

Nurse

Lee Ryan ext 755, is located at the D Block end of the Deans' corridor. Students must have either an appointment (made on Schoology) or a note from their teacher. Email: nurse@lynfield.school.nz

If you have any concerns health-wise and want to chat with the Nurse, please text or call 021 988 417. The nurse is available for appointments during the following times: 9.10am - 11.30am and 12.00pm – 2.30pm

Physio

There is no physiotherapist on site currently. We will be reintroducing physio appointments when the Medical Centre in the Students Services building is complete.

Careers

Wendy Keir ext 744, is located in the Seminar Room. Students can contact Mrs Keir by email wkeir@lynfield.school.nz

Year 9-12 students can use interval, lunchtime, before or after school by arrangement (when there is no Staff meeting).

Year 13 students should use their study block where possible

Gateway

Esther Harvey ext 745, is located in the Seminar Room. Students can contact Mrs Harvey either by email eharvey@lynfield.school.nz or texting 021 944 013 to make an appointment time. When texting, students must clearly state their full name and Hui mai class in the text.

International

Julie Bradley ext 740, **Grace Chew** ext 750 and **Vibha Bangs** ext 748 are located in Te Whau meeting room in the Deans' corridor. Julie may be contacted via email jbradley@lynfield.school.nz Grace may be contacted via email international@lynfield.school.nz Vibha may be contacted via email homestay@lynfield.school.nz

Music Tutors for Instrument Lessons



Michael Howell
Guitar



Charlie Isdale
Saxophone, Violin



Greg McLarin
Piano, Saxophone, Guitar



Sigmund Sue
Piano, Voice



Donald Nicholls
Clarinet, Saxophone



Tom Broom
Drums



David Hodkinson
Bass Guitar



Lorna Wright
Flute



Kathleen Tomacruz
Cello, Guitar



Matthew Verrill
Trumpet, Trombone

NCEA Results 2021

Our NCEA 2021 results, like most schools across Aotearoa, were impacted by Covid 19.

Despite the challenges of remote learning, our Year 11,12 and 13 students achieved some very pleasing results. Many students were able to maximise the Learning Recognition Credits offered by NZQA and use their Unexpected Event Grades to achieve an external standard, having supplied enough evidence throughout the year. Even though our results were down from previous years, at least 75% of our students gained their NCEA certificates and the College was also above the national results for Levels 1-3.

IN SUMMARY:

Year 11: 77.8% gained L1 certificate. Of these 26.2% had their level certificate endorsed with Excellence and 34.5% endorsed with Merit.

Year 12: 80.7% gained L2 certificate. Of these 24.3% had their level certificate endorsed with Excellence and 29.7% endorsed with Merit.

Year 13: 74.6% gained L3 certificate and 59.4% gained UE, which is above the national statistics of 50.3%. Of those receiving their L3 certificate 21.5% were endorsed with Excellence and 28.8% at Merit.

Note: These results are as of 26/02/2022 and may vary slightly before finalised in March by NZQA.

REVIEW AND RECONSIDERATION OF EXAM PAPERS

A reminder, that the last day for a review and reconsideration of exam papers is **Friday 25 February**. See the following link for information and the application process. We advise students to show their teacher their paper before applying. Exam papers were returned to candidates digitally at the end of January.

<https://www.nzqa.govt.nz/ncea/ncea-results/reviews-and-reconsiderations/>

Scholarship Exam Results for 2021

The number of students who were entered or chose to sit Scholarship exams in 2021 was significantly reduced because of Covid lockdowns and the disruption to learning these caused. However, 6 Scholarships were awarded to 4 Lynfield College students across 5 subject areas for 2021. These included 2 Outstanding Scholarships (Design and Biology).

STUDENTS WHO GAINED SCHOLARSHIP WERE:

Isha Ramanlal in Economics, Statistics and Biology (Outstanding)

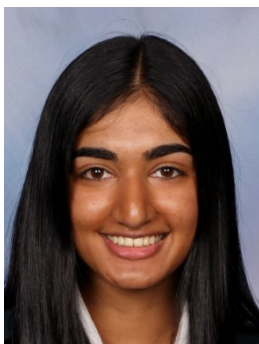
Eliana Sanvictores in Design (Outstanding)

Benjamin Mason in Design

Aashish Ramanlal in History

Congratulations to all our Scholarship students and especially to Isha Ramanlal, who gained 3 of the 6 Scholarships, including one Outstanding Scholarship.

Students who gained a scholarship are given a monetary award for their university study. The College is extremely proud of these students. They gained top academic awards despite the challenges they faced to their learning in 2021. The school also recognises the work done by the teachers to prepare and tutor these high achievers.



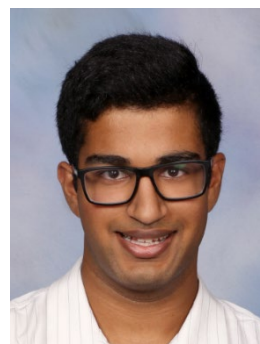
Isha Ramanlal



Eliana Sanvictores



Benjamin Mason



Aashish Ramanlal

Student Assessment Guides 2022

Links to these are available on our website and students can access them on Schoology. It is important that students read these guidelines carefully before assessments begin. Their Hui mai teachers will be unpacking these guides with students however, we encourage parents and caregivers to also discuss them with their young people.

YEAR 13 ASSESSMENT GUIDE

https://docs.google.com/document/d/1fZFB8_P358OB_vkD8ddQee6MUb83TlonyYokO4jCu_E/edit?usp=sharing

YEAR 11 AND 12 ASSESSMENT GUIDE

<https://docs.google.com/document/d/1Dbrpzc9VVjqYyFF-ZiZf-bb8xJlej8oBx7fK08Wdjk/edit?usp=sharing>

YEAR 9 AND 10 ASSESSMENT GUIDE

<https://docs.google.com/document/d/1Izj2QMYZXpY28I-c6HZ6BMtJYZscnvG/edit?usp=sharing&ouid=105652170016862959268&rtpof=true&sd=true>

Individual Honours

If your son and/or daughter has achieved representative status (Auckland or New Zealand) or has competed in such events the Sports Office would very much like to know. Please either ask them to bring proof of the team they made or level they achieved (e.g. certificate, letter of selection etc.), so we have the exact wording of their achievement, or email these details to: fwalbran@lynfield.school.nz

Coaches and Managers Needed

We are sending out a plea for your support. Without coaches and managers we cannot enter a teams into interschool competitions. It is great fun, incredibly rewarding and truly worthwhile. Please consider helping us. Right now we **URGENTLY** need coaches for Cricket and Dragon boating in Term 1. If you are able to help, or know someone who can, please email: sport@lynfield.school.nz

Staff Vacancies: Student Services Receptionist and Administrator

TERM-TIME ONLY | PERMANENT

An exceptional person is sought for the role of Receptionist and Administrator in our Student Services Centre. The successful applicant must have a genuine interest in supporting young people and their wellbeing, and will be friendly and approachable, ensuring our students and whanau feel welcome and valued.

The role provides administrative support for our team of Guidance Counsellors, our Careers Department and also our Nurse. A high level of competency with computer skills, including Google Drive applications is needed as well as efficient organisational skills with the ability to prioritise work and a willingness to work cooperatively in a team. Effective communication skills along with patience, initiative, multi-tasking, problem-solving will be required, to ensure the Student Services Reception meets the needs of our students and staff.

The position is for 30.0 hours per week, during term time only. Please Note: Previous applicants will be considered and need not re-apply. For more information about the College visit www.lynfield.school.nz.

The offer of the position will be subject to the outcome of a Police vet. Applicants must have New Zealand residency. Please send a cover letter addressed to the Principal and a brief CV with two references to: Lee Bullinga, Executive Secretary at jobs@lynfield.school.nz

Applications close 4.00 pm, Friday 10 February 2022

Staff Vacancies: Sports Engagement Leader

FIXED-TERM, PART-TIME, TERM-TIME ONLY

We are looking for a Sports Engagement Leader to work alongside the Sports Department to increase overall engagement, participation and enjoyment in sport and physical activities at the College.

Starting in February 2022, this role is part-time with the possibility of additional hours during the school holidays. The position may suit someone enrolled in a tertiary programme.

THE SUCCESSFUL APPLICANT WILL:

- Possess strong organisational and administrative skills
- Have excellent IT, written and verbal communication skills
- Enjoy working with young people across both College and contributing Intermediate schools
- Be positive and enthusiastic about physical activities, sports and the opportunities they provide
- Have initiative, be innovative and have the ability to prioritise workloads in busy school environments.

The role is subject to a satisfactory Police check. Applicants must have New Zealand residency. For more information about the College visit www.lynfield.school.nz Please send a cover letter addressed to the Principal and a brief CV with two references to: Lee Bullinga, Executive Secretary at jobs@lynfield.school.nz

Applications close 4.00 pm, Friday 25 February 2022.



NOW RECRUITING!

No. 3 (Auckland City) Squadron, Air Training Corps
www.3squadron.org.nz

DARE TO TAKE THE CHALLENGE?



WHAT DO WE DO?

Flying | Shooting | Bushcraft | Tramping | Drill | Leadership |
Ceremonial Parades | Public & Community Events |
Cadet International Exchanges



ELIGIBILITY:

You must be between 13 (or have started High School) and 15 years old to join.



LOCATION:

Ventura Block, Building 47, Unitec Campus,
Gate 3, Carrington Road, Mt Albert, Auckland



WHEN:

We meet every Wednesday, 6-9pm (school term).
Join us on our recruiting day on Saturday, 26th February 2022!



@3SquadronATC



@3SquadronATC

LEARNER-FOCUSED PROGRAMMES 2022

A thorough review of the Lynfield College curriculum and timetable has created opportunities for us to refresh and consider what makes learning at Lynfield unique. We put learners at the centre, we have innovative learning experiences, we are future-focused, and we value relationships.



HUI MAI

Students are in groups of 16-19 students. They meet twice a week with their **Hui mai** teacher for pastoral connections. The **Hui mai** programme includes goal-setting, academic coaching, careers, relationships.

*The **Hui mai** teacher is the connection for whānau.*



LIFE SKILLS

The **Life skills** programme runs for Year 11- 13 students. Through a rotation of activities, the students will learn about the world outside school. Topics include careers, healthy relationships, practical skills, and rights and responsibilities.

***Life skills** prepares students for life beyond school.*



WĀ HONO

Wā hono is for Year 9 and 10 students to make links across their learning. They learn about a topic across their classes, then apply their learning in a way that is meaningful for them.

***Wā hono** encourages students to be agents of their own learning.*

Learn to Live Our vision is for our learners to be active and successful, both at school and beyond. We recognise that learning is a partnership between student, whānau, and school. The development of programmes which are uniquely ours puts us in a strong position to include the upcoming New Zealand Curriculum refresh and changes to NCEA.